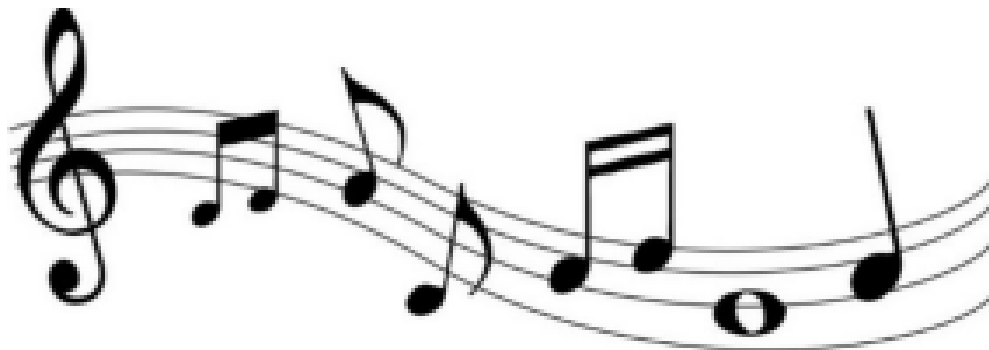


2024-2025



DAMONTE
R A N C H
Band

BAND HANDBOOK



UNITY - INTEGRITY- EXCELLENCE

WELCOME TO THE DAMONTE RANCH BAND PROGRAM!

You are now a member of one of the most outstanding programs at Damonte Ranch High School.

WE BELIEVE:

- Everyone has the opportunity to participate in music.
- Music is an integral part of a student's emotional and intellectual development.
- Band develops self-discipline, positive work habits, and group skills necessary for success in life.
- Striving to achieve a high-quality standard in Band will transfer into high standards in all other areas of the students' lives.
- Band offers creative & aesthetic opportunities that provide for emotional and artistic growth.
- Students' social skills, self-esteem, and positive attitude are developed through band.
- Band gives an emotional & expressive outlet during the day.
- Band strives to teach students how to become great humans through music.
- The success of our Band program is based on unity, integrity, trust, hard work, and a commitment to excellence in all areas—a major goal of education.

Every member of our program plays a significant role. Attitude and effort are everything. Every member must constantly choose to exhibit unity, integrity, and choose excellence inside and outside of rehearsal in order to achieve our true potential as humans and musicians.

Table of Contents

General Conduct.....	4
Attendance.....	4
What to Bring to Rehearsal.....	5
Rehearsal Norms.....	5
Performance Conduct.....	6
Travel Guidelines.....	6
Staff & Chaperone Courtesy.....	7
Fine Arts Dept. Missing Performance Policy.....	8
Instruments.....	8
Music.....	8
Marching Band Uniforms.....	9
Concert Band Attire.....	10
Cut Time & Individual Student Accounts.....	11
Logging In To Cut Time.....	11
Expenses, Fees & Fair Share.....	12
Course Offerings & Performing Ensembles.....	13
Wind Ensemble.....	13
Concert Band.....	13
Symphony Winds and Percussion.....	13
Marching Band (August – November only).....	13
Jazz Band.....	14
Percussion Techniques.....	14
Color Guard & Winter Guard.....	14
Winter Drumline/Indoor Percussion.....	14
Musical Pit Orchestra.....	14
Pep Band.....	15
Related Thoughts.....	15
GRADING POLICY.....	16
Music/Performance Skills.....	16
Attendance/Participation.....	16
Attitude.....	16
Football Games.....	17
Awards.....	17
Letters/Pins.....	18
STUDENT LEADERSHIP.....	20
Drum Major.....	20
Assistant Drum Major.....	20
Brass/Woodwind/Guard Captains.....	20
Section Leaders.....	20
Student Management.....	20
Band Parent Organization.....	21
Communication.....	21
Frequently Asked Questions.....	23
Schedule of Events:.....	26
DRHS Cell Phone & Technology Policy.....	27
Handbook Recognition Form.....	28

General Conduct

All students are to abide by the guidelines as established in the Washoe County School District Code of Conduct, the Damonte Ranch High School 2024-2025 *Student Handbook* and this Band Handbook. Failure to comply could result in a student being referred to the office, barred from one or more performances, a failing grade in the course, or removal from the program.

Students participating in the Damonte Ranch Band Program are expected to adhere to the following guidelines:

- To follow all rules and responsibilities set by DRHS on and off campus while representing the school and band program.
- To respect the rights and safety of others.
- To be courteous and respectful to other students, staff, and parents. This includes following all instructions given by any staff member, parent, or adult.
- To represent the DRHS Band Program in a positive manner via any group or individual communications.
- To avoid inappropriate language or discussion topics at any time.
- The use of drugs, alcohol, tobacco, and vaping are prohibited at any school function.
- Weapons, explosives, fireworks, etc. are prohibited at all times.
- To follow DRHS guidelines regarding dress code while attending any event in which the school and band program is being represented.
- To remain on my assigned bus and assigned room.
- To not attempt to change buses, seats, and/or rooms after being assigned.
- To be respectful and courteous of others in common shared areas (use headphones with personal electronic devices, no PDA, no drumming on bus seats).
- To maintain my uniform, instrument, and equipment in a neat, clean, and presentable fashion.
- To maintain common shared areas in a neat, clean, and presentable fashion.
- To respect the uniforms, instruments, and equipment of others; this includes other students at DRHS and students of other schools.

Attendance

Membership in the Damonte Ranch High School Band carries with it the responsibility of attendance at ALL rehearsals and performances.

If you know your child is to be absent, fill out the Excused Absence Form by the appropriate date. A large portion of a student's grade in Band is earned through positive progress and effort at rehearsals and participation at all performances. Poor attendance or excessive tardiness will result in possible removal from one or more performances, a failing grade in the course, or possible referral to the Damonte Ranch High School Administration.

What to Bring to Rehearsal

- (Marching) LARGE Water Jug (please do not just bring one plastic bottle - it is not enough)
- (Marching and Concert) Instrument
- (Marching and Concert) A 2-inch three-ring binder with fifty clear 8 1/2 by 11" sheet protectors for your music and or drill **Two binders—one for concert music and one for marching/pep band music— would be ideal**
- (Marching) Your Dot Book
- (Marching and Concert) Any instrument accessories (reeds, valve oil, cleaning cloth, etc.)
- (Marching) A black towel to use to protect your instrument when placing it on the ground
- (Marching and Concert) A pencil - *The difference between a good musician and a great musician is a pencil.*
- (Marching) Any necessary healthy snacks
- (Marching) Sunscreen
- (Marching) Bug Spray
- (Marching) Appropriate athletic clothing (low-top tennis shoes, athletic shorts, etc.) *The marching style we use requires the foot and ankle to move freely. You will be asked to change into proper footwear before you are allowed to rehearse.*
- (Everything in life) A great attitude!

Rehearsal Norms

- **Early is on time and on time is late.** All members are to be seated with their instrument, music, and pencil when the Director, Staff, Student Leader, or designated leader of the group steps on the podium. For Marching Band, all students must be at the assigned location (posted on the Band App) ready to begin at the start time of rehearsal (e.g. if rehearsal begins at 5:30 p.m. and we are meeting on the Practice Field, students are ready to stretch or begin visual warm-ups right at 5:30 p.m. and are not walking to the field at that time).
- **Talking is kept to a minimum.** Failure to comply with this rule will result in deduction of rehearsal credit or possible dismissal from the rehearsal. There is a chain of command in which questions can be asked; however, active rehearsal must be silent and productive. Socialization opportunities will be given during various points during the rehearsal. Talking while others are talking goes against our values of integrity and respect. *We must rehearse in the same manner as we perform.*
- **Students will not play out of turn.** Extraneous sounds added when the conductor stops are not acceptable. Not playing or not being ready to play when necessary is also not acceptable rehearsal etiquette.
- **Students are responsible for their own success.** Students are expected to take notes, write in their music, come to rehearsal prepared, maintain a calendar app/to-do list, and anything else necessary for their own success. We are committed to helping students develop the proper tools to transition into adulthood, but they must be willing to do what is necessary to help themselves and not rely on parents or staff to do everything for them.
- **Profanity and inappropriate discussion topics will not be tolerated.** Failure to comply with this rule will result in the deduction of rehearsal credit and in extreme circumstances, possible

dismissal from the rehearsal or program.

- **Students must respect their staff, their peers, their craft, and themselves.** Jokes that could be perceived as hurtful, microaggressions, discrimination, self-deprecation, or any type of hostility will not be tolerated and could be the cause for removal from the program. All members of this program are important and deserve respect and positive treatment.

Performance Conduct

- Band members are to be in the Band Room, dressed for the performance, and ready to play at the call time set by the Director. **The Director has the right to hold any player that has not pre-arranged a late arrival from the performance, resulting in an unapproved absence for that performance.**
- Students are expected to behave professionally while participating in or watching a performance. Students should refrain from talking, working on anything unrelated, engaging in PDA, or being unsupportive in any way. Students are expected to be attentive, considerate, engaging, and respectful as we would expect other groups to do the same. During moments where talking is acceptable, the use of profanity or inappropriate discussion topics are not permitted nor tolerated.
- Inappropriate behavior will be cause for a lowered performance grade.
- Once you are seated you are to remain there. If you absolutely must use the restroom, **do not leave while a group is performing!** Students must stay in groups of two or more.
- **Non-Band members are asked to remain outside of the Band Room both before and after the performance.** Please remember that there are a lot of us. We need all the room we can get.
- **Non-Band members are not permitted to sit with the Band (excluding Booster Parents).**
- Once the performance is complete, properly put away all equipment. If equipment trailers are being used, all students should stay to help unload. **Students will be dismissed when all uniforms and equipment are put away.**
- **NO CELL PHONES OR HOMEWORK WILL BE PERMITTED ONCE CALL TIME HAS ARRIVED UNLESS OTHERWISE STATED.**

Travel Guidelines

When we travel, you are an ambassador to Damonte Ranch High School and the city of Reno. Every decision you make will reflect Damonte Ranch High School, the Band, and your community. Be aware of your higher responsibility when we travel.

All students are to abide by the travel guidelines as established in the Washoe County School District Code of Conduct, the Damonte Ranch High School 2024-2025 *Student Handbook*, and this Handbook. Failure to comply with these guidelines may result in the student being reprimanded, sent home at the parent's expense, or in an extreme case, being handed over to local law enforcement authorities.

While traveling I will:

- Follow all rules placed before me by hotels, bus companies, or any place of business.
- Respect all facilities that we use and visit.
- Respect all private property on buses and in hotels.
- Remain in my assigned seat while the bus is moving.
- Follow traveling guidelines set by any adult.

- Keep quiet during attendance procedures.
- Not be distracting to other department members while traveling (no drumming on the bus; music should be listened to with headphones; keep talking at an appropriate volume level).
- Be considerate to those around me.

While in the hotel I will:

- Only remain on my assigned floor.
- Not run in the halls, jump on the beds, or rearrange the furniture.
- Respect the room and materials that I am provided.
- Not slam my doors.
- Be considerate of other hotel guests.
- Be in the room ready for room check (in the room where parents can see me, not in the bathroom, etc.).
- Not leave the room after room check for ANY reason other than an evacuation due to a natural disaster.
- Not order any food that will be delivered after room-check.
- Be respectful to my assigned chaperone.
- Not attempt to switch rooms or sneak out into other rooms.

While waiting to perform / while performing I will:

- Be respectful of my attire.
- Demonstrate understanding that I am representing myself, my parents, and the DRHS Band Program.
- Be respectful to all groups performing.
- Not use profanity or display awkward or inappropriate signs of affection to others.
- Not talk during other group performances.
- Conduct myself in a professional manner.

In general, I understand that:

- I am accountable for my actions and will accept the consequences for poor decisions.
- I will spend my time with a chaperone if I violate any rules or policies.
- Violation of any trip policies, the code of conduct, Music Department policies, school policies, or the law may result in my parents or guardians driving to pick me up or being required to fly home at their expense and not being allowed to return to the Band Program in future years.
- Traveling is a privilege and not a right.
- I will follow the directions and rules provided to me by any adult WITHOUT complaining, eye rolling, or any other act of disrespect.

Staff & Chaperone Courtesy

The Damonte Ranch Band staff is a direct extension of the Director. *Anyone asked to step in front of the Damonte Ranch High School Band, you, or your section is to be treated with the utmost courtesy and respect.*

Chaperones are also an extension of the Director. We could not travel without our dedicated chaperones. They work very hard to make your trips as enjoyable and rewarding as possible. The

chaperone's only pay is when offered a polite "thank you."

If you find yourself in disagreement with a chaperone or staff member, please **do not argue**. You are to do as instructed and immediately **inform the Director of any problem**. If a staff member or chaperone finds it necessary to report a student to the Director with due cause, that particular student risks disciplinary action. If the staff member or chaperone is in error, the Director will handle the situation in an appropriate manner. This policy will be strictly enforced.

Fine Arts Dept. Missing Performance Policy

Performances in our co-curricular musical classes carry extra weight in the calculation of grades. Missing a performance has an extremely negative effect on the ability for the group to perform to their full potential, which negatively impacts one's overall course grade. An alternate assignment will be provided upon request for students who miss dress rehearsals or performances; however, these assignments will be counted for partial credit, as the performance is a circumstance that cannot be duplicated.

Instruments

Anyone found to have mistreated, damaged, or destroyed facilities, instruments or equipment will be dealt with in an appropriate manner. The Damonte Ranch High School Administration will handle any case of destruction of Band equipment by students. Students may be responsible for the replacement cost of a damaged instrument.

Do not handle another Band member's instrument or equipment even with consent. A general rule is "you break it, you buy it." If it is not yours, do not touch it!

Many everyday supplies, reeds, valve oil, cork grease, etc., need to be purchased through local music merchants. Some items, such as mallets, drum sticks, or items similar in nature will be purchased through the director. Students should be prepared before every rehearsal with their necessary items. Students that require reeds should always have a minimum of five reeds in their case.

District owned instruments become the responsibility of the students to whom they are issued. Privately owned instruments are the responsibility of their owners. **Damonte Ranch High School and the Washoe County School District are not responsible for lost or stolen items.**

All students are expected to have their instruments and equipment at all rehearsals unless instructed otherwise by the Director. Lack of equipment may result in a lower attendance grade, as students will be unable to fully participate. **Students must pay the WCSD a rental fee of \$50.00 per year.**

Music

The most important thing to realize is **if you have a piece of music in your folder, you are responsible for being able to perform it** in rehearsal in a manner that is not detrimental to the progress of the entire ensemble. Practice. The Director of Bands and the Band Staff do not have the time or the resources to give every student a private lesson when we are meeting as a group. This will waste full ensemble time. The objective of rehearsal is to learn everyone else's parts and come prepared with your part learned. Please ask your section leader, staff member, or director if you are struggling!

You will be required to memorize the music that is performed on the field for marching band. Your assigned staff member or section leader will test you on your knowledge and performance quality during rehearsals. You will be tested on a pass/no-pass system. If you do not know your part, you may potentially be benched for a performance. Everyone needs to give 100% for success. We are as strong as our least prepared member.

Many selections of the Marching and Concert Literature may require a pass-off test. Pass-offs will either be done in front of the group during class, or in front of a section leader during sectionals. Any sectional pass-off will be conducted by a section leader. If a student passes, this will be communicated to the director. If the student fails, the student will have to re-do the assessment in front of the director and spend extra time working on the music with a section leader. All pass-offs are pass/fail.

Marching Band Uniforms

When you are in uniform, you are no longer an individual, but a representative of our Band, school, and community, so please behave accordingly. **Behavior that does not positively represent the group, especially in uniform, will not be tolerated.** (Public displays of affection, profane language, unprofessional behavior, etc.)

- **No consumption of any food or drink while in uniform unless permitted by band staff.** Water is permitted.
- Uniforms must be completely worn at all times. The 2024 marching uniform includes black shoes, black socks, black gloves for wind players, pants, and top.
- Students will keep their uniform in the band room following each performance. The uniform should be hung properly on its hanger so it is ready for the next performance. **Nothing but uniform parts should be left in the uniform garment bag.** At the end of the season, students may keep their digital print tops and shoes, but are required to return their bibbers and gloves.
- Dangling jewelry, baseball caps, hats, etc. are not to be worn with the uniform when actively performing.
- When in uniform, a student's only option is to be at the designated performance site.
- Every Band member is responsible for the cleaning and maintenance of their own personal uniform parts (*socks, shoes, undershirts, etc.*).
- All members will wear their hair in a fashion to be decided by the Director and staff for each performance.
- We are lucky to have dedicated parents who give long hours in the upkeep of our uniforms. Do everything you can to assist these parents in their work. Be cooperative. A simple "*thank you*" does wonders!

Concert Band Attire

Wind Ensemble will have their first concert as early as late September/early October. Students should wear nice black pants and full or $\frac{3}{4}$ sleeve shirt or blouse, or a black dress or skirt that comes below the knee (velour is acceptable). Any dresses or skirts that do not go to the floor require tights or leggings to be worn underneath. The clothing should not have embellishments that are not black, and no distracting accessories. Shoes and nylons should be black. Hair should be neatly styled. Any ties worn must be black and are customary to be worn with a collared button-down shirt. No hats can be worn. No jeans, jorts, jeggings, yoga pants, sweatpants, short dresses or skirts, skinny jeans, or (only) leggings will be accepted. **Appropriate attire must be worn, or the student will not be allowed to perform.** This is non-negotiable. If obtaining proper concert wear is a financial hardship, please communicate that need as soon as possible so we may find an appropriate solution.

Cut Time & Individual Student Accounts

Students in the Band are able to keep track of their personal fundraising efforts and financial activity within the Band Program in the form of Individual Student Accounts (ISA). Records are kept in the same fashion as a bank statement with debits and credits to each account. Students may receive money into their account either by payment to the school bookkeeper (*personal check*) or by participating in various fundraisers. **Any funds placed into an ISA through Band fundraising activities or sales are not refundable.**

ISA accounts are used to track the various out of pocket expenses that students incur while in the band, band “fair share” fees, school instrument rental fees, or other miscellaneous expenses such as the Band Banquet or Band apparel.

PLEASE, NO CASH! Any fee payments or money earned through Band fundraising projects should be turned into the school book keeper or deposited in the Band Office door mailbox slot.

The Director and the Band Boosters cannot be held responsible for lost or stolen money.

ISA balances are available through your Cut Time account.

When setting up your profile for the first time, you may be asked to enter a **username**, **email address**, or both (if one has not already been assigned). Either of these can be used to log in to Cut Time.

Logging In To Cut Time

When logging into your profile, you can use either of these two combinations successfully:

- **Email address and Password**
- **Username and Password**

If you have two different profiles (i.e. one for a middle school account and one for a high school account), the same **email address** and **password** cannot be used for both. ***NOTE: Having multiple profiles is not recommended. If you have multiple profiles or need access to multiple accounts, please contact Cut Time Support.**

Once your **username** is set, you CANNOT change it. If the **username** needs to be changed, please contact Cut Time Support. Your **password** can be changed in one of three ways:

- When logged in, scroll to the bottom of your **Profile** and click the **Password** tab. Type in your new **password** and click "**Save**"
- On the Cut Time Login page, click "**Forgot your password?**" and enter the **email address** associated with your profile. Click "**Reset my password!**" to send an email with a password reset link.
- An administrator can access the **Profile** page for any user, scroll down, click the **Password** tab, and click "**Reset User's password**"

***NOTE:** If you have profiles in more than one Cut Time Account, it is essential to create a **username** for

each account. Once you have created these **usernames** you may use the same password for each one. However, if you try to sign in to your profiles using the same **email address** and **password**, the system will lock you out of your profiles. If this happens, please contact Cut Time Support.

Same email address + same password = Not okay, **will not allow you to sign into both accounts**

Same email address + different passwords = Okay, but **not recommended**

Different usernames + same password = Okay

Different usernames + different passwords = Okay

Expenses, Fees & Fair Share

WCSD and DRHS do not provide enough funding to adequately pay for expenses incurred during the school year, most of which happens during the marching season. The fees charged to students help cover the costs of competition entry fees, transportation, building props, music and drill, additional staffing, and more! These larger expenses utilized by the entire band are equally divided amongst the students. We have a two-tiered payment system this year. The total band fee is \$650. However, any parents that opt to volunteer for 25 hours this year will have a break in their fees and will have the final payment waived. Any of the 25 hours that are not completed will be billed to the account for \$8.00 an hour.

Payments may be made in four installments due on:

- August 2, 2024 – \$100
- September 3, 2024 – \$175
- October 1, 2024 – \$175
- November 1, 2024 - \$200 for all
- December 15, 2024 – If 25 volunteer hours aren't met, hours remaining will be billed to Cut Time.

Types of Individual Expenses

- Marching Band Shoes (\$40)
- Apparel costs (band jackets, shirts, travel bags, etc.)
- Marching Band Show Shirt (1st order included in fees)
- Black Marching Band Gloves (1st pair included in fees)
- Marching Band Uniform: bibbers & top (included in fees)
- Guard equipment (costuming, rifle and/or saber)
- Winter Guard/Winter Percussion expenses (for participants only)
- School instrument usage fee (if applicable, \$50)

Course Offerings & Performing Ensembles

The DRHS Band program consists of the following large ensembles. All courses may be repeated for credit. **Students may pre register for any of these courses except Wind Ensemble, which is by audition and/or Band Director approval. Fees are required and vary from year to year.**

****There is a form students may fill out through the district in order to make any music class an honors credit. See Mr. Kasper for further information****

Wind Ensemble

This course is designed to provide instrumentalists with an experience in all aspects of the modern wind band technique. The Wind Ensemble will consist of students who are at a playing level of upper intermediate to advanced levels and will typically perform music from the grade IV to VI standard wind band repertoire. Exploration of various styles, theory, and techniques of wind instrument performance will be offered. There will be required after school rehearsals and performances throughout the school year. All members of the Wind Ensemble are eligible to audition and participate in the Washoe County and Nevada All-State Honor Bands and Solo and Ensemble Festivals. **All members of the Wind Ensemble are expected to participate in the Marching Band.**

Concert Band

This course is designed to provide instrumentalists with an experience in all aspects of the modern wind band technique. The Concert Band will consist of students who are at a playing level of beginner to intermediate levels and will typically perform music from the grade I to III standard wind band repertoire. Most rehearsals will take place during required classroom time. There will be required after school rehearsals and performances throughout the school year. All members of the Concert Band are eligible to audition and participate in the Washoe County and Nevada All-State Honor Bands and Solo and Ensemble Festivals. **All members of the Concert Band are expected to participate in the Marching Band.**

Symphony Winds and Percussion

This course is open to any Freshman, Sophomore, Junior, or Senior member of the PAC Band Program. This course is designed to study orchestral literature and individual excerpts. Students will perform a variety of large ensemble literature of diverse genres and instrumentation. Students will also be expected to prepare solo etudes, orchestral excerpts, and music history components of music literature from varied time periods. Students must anticipate at least three co-curricular concert performances after school as well as any other assigned events. This class will also regularly combine in conjunction with the Symphonic String Course for several performances. Admission into this course is at the discretion of the Band Director. This course satisfies the after-school PAC class requirement necessary for those seeking a PAC diploma. **Students must be concurrently enrolled in Wind Ensemble/Concert Band/Percussion Techniques.**

Marching Band (August – November only)

The Damonte Ranch Marching Band is a competitive marching band, and one of the most recognized and

acclaimed performance ensembles in Nevada. It explores contemporary trends in competitive marching band. This ensemble's membership—brass, woodwind, percussion, and color guard—is drawn from the Wind Ensemble, Concert Band, Percussion Ensemble, and at-large school population.

Jazz Band

This group is for students who wish to further their musical knowledge and skill through the study of Jazz. Members of the Jazz Ensemble must be enrolled in Concert Band, Wind Ensemble, or Percussion Techniques, unless by special permission of the director. The main focus of the Jazz Ensemble will be on the performing of various jazz styles, articulation, and improvisation of jazz. The Jazz Ensemble performs at various concerts as well as festivals and competitions in and around the Reno area. This course satisfies the after-school PAC class requirement necessary for those seeking a PAC diploma.

Percussion Techniques

This class will provide the percussion students with a comprehensive study of all aspects of percussion music and performance. Studies will include snare drum, mallets, drum set, auxiliary instruments, and styles of percussion from world music to jazz. There will be required after school rehearsals and performances throughout the school year. **All members of the Percussion Techniques Class are expected to participate in marching band.**

Color Guard & Winter Guard

Color Guard is during the fall semester at the same time as marching band. It is designed to introduce and develop a student's knowledge and skill in fundamental and advanced dance and auxiliary equipment techniques and performance. **During the first 11 to 12 weeks of the school year, students will participate in shows, contests and football games with the Damonte Ranch Marching Band.** For the remainder of the year, the focus will shift to Winter Guard. **All students** are required to participate during scheduled rehearsals and performances beyond the normal school day, as well as those that occur during the summer, some weeknights, and occasional weekends. Students will also be required to attend camps at the school prior to the beginning of the school year.

Winter Drumline/Indoor Percussion

Damonte Ranch **Indoor Percussion** consists of the marching percussion and front ensemble sections of the marching band as well as any interested wind players. This ensemble marries elements of music performance, marching, and theater. Membership is open to any registered music student from Damonte Ranch High School. This marching ensemble is an extracurricular activity. The competitive season starts at the conclusion of the Marching Band season in November and runs through the end of March.

Musical Pit Orchestra

Students are selected to participate in the pit orchestra for the Musical. This experience simulates real-world expectations for this type of performance opportunity with limited group rehearsal time, multiple nightly shows, and collaboration with theater and vocal performers.

Pep Band

Band students will be divided between two pep bands. Each pep band will be responsible to perform pep tunes and cheer on our fellow Mustangs at half of the home basketball games. This process is intended to provide a break in student schedules and reduce individual performance commitments. Students are welcome to perform in the opposite band in which they are not a designated member.

Related Thoughts

YOU CAN TAKE BAND AND STILL GRADUATE!

PRIORITIZE: First and foremost, to take music throughout your high school years, prioritize it and make up your mind that you *will* find a way to take it. Hold yourself to that priority when planning and you will discover that you can be in a music class every semester. If you place music on your schedule first each year and leave it there, you will most likely find that the other blanks will be more than sufficient to meet your needs. You must determine if music is important in your life and work other classes around it.

ELECTIVE SYNDROME: *“I want to take this and this and that and this and this and that and that and this.”* After studying the requirements to graduate and talking with many juniors and seniors, it has come to our attention that the “Elective Syndrome” can affect decisions as a freshman. It is possible to take band every year and still include all of the other electives that you wish to take. Membership in even more than one ensemble is possible! The cure to this “syndrome” is to plan for the long-term rather than the short-term. Talk to senior band members about scheduling. Ask for help with your four-year plan.

OTHER ACTIVITIES: No one should be excluded from music courses, especially on the basis that students are involved with other activities (*sports in particular*). To make this happen, the Director will be in constant contact with all coaches and club leaders. It is merely an issue of planning and commitment. The myth that students involved with sports cannot be in the Band Program is just that, a myth. If there are any questions concerning conflicts, see Mr. Kasper immediately. Every concern or conflict will be handled on a person-by-person basis.

PLAN: Plans can change but changing and adapting your plans is better than aimless wandering. Take charge of your future by plotting out your four-year course of study. Each year re-examine your plan and see if it is doing what you want it to do. Make changes intelligently. Do not make snap decisions about classes. Look at all sides of every issue pertaining to classes in which you are planning to enroll and be flexible with your decision processes. Please understand that many colleges would rather see constant participation in a music class than as many AP Classes as possible.

GRADING POLICY

Rehearsal & performance participation, playing tests, competencies, written work, and daily class attendance makes up the band grade. The semester final exam constitutes up to 20% of the grade, per WUSD policy. The expectations are very simple; be on time (*early*) to all scheduled events, have perfect attendance, maintain a positive and healthy attitude, and play (*and march*) with high quality at all times.

Music/Performance Skills

Band is a performance class. With that comes the expectation that students can adequately demonstrate the comprehension and physical requirements necessary for their instrument/part. This can be in the form of playing tests (scales and literature), sight-reading assignments, music theory exercises, or instrument-specific written exams.

Attendance/Participation

Students must be prepared with all necessary materials (e.g instrument, music, dot book, pencil, ALL uniform parts, etc. **NO GUM!**). This allows for full participation in rehearsal/performance activities. Improper use of technology will result in a grade reduction. Because each rehearsal builds off the previous, it is imperative students are in attendance and are present for all of each rehearsal and performance. **We cannot expect to perform our best or to our full potential if even one person is absent!**

Excused vs. Unexcused: There *is* such a thing as an excused absence or tardy. If an individual has a legitimate reason for being absent or tardy, that member can obtain permission to be excused through prior approval by the Director only. This request must be made to Mr. Kasper via the excused absence form in advance of the date of the requested tardy/absence. Please allow at least two days for the director to consider your request. Generally, serious personal illness, medical emergencies, family emergencies and religious events are excused. All performances and rehearsals will be on the calendar months in advance.

“Early is on time. On time is late. Late is unacceptable.” BE EARLY! General rule: 10 minutes prior to start time, you are at the correct location completely warmed and ready to perform. Excessive tardiness resulting in missing more than half of a rehearsal will be counted as an unexcused absence with full loss of points for that rehearsal.

For performances, one unapproved absence is grounds for failure in the course.

Attitude

This is often difficult to quantify, but can be tied in with participation. Band is a cooperative activity. There can be disagreements, but we must still find ways to work together to achieve our goals and objectives. An uncooperative attitude not only inhibits the progress of the individual but also the entire band. Allowing for collaboration is a rehearsal skill that is just as important as preparing individual parts.

Mr. Kasper wants all students to have a successful and musically enriching experience in band this year. One’s grade in band is reflective of the effort that is put forth into their progress. Students should

constantly strive to reach their potential by always putting forth 100%. Students are graded on participation, rehearsal etiquette, assignments, playing tests, performances, and merit. Students should always take advantage of assistance provided to them and ask questions if there are struggles or concepts that lack clarity. Mr. Kasper is always happy to provide assistance; however, students need to be proactive and ask for help when needed.

Football Games

Football games are considered performances and will factor into the student's marching band grade. Students will be required to stand and play/participate with the cheers in the student section during the 1st, 2nd, and 4th quarters. If students behave appropriately, they will receive 3rd quarter off and be allowed to sit in various parts of band stands with their friends. Students may use this time to use the restroom and socialize. Students will be expected to be in uniform for all games and will likely perform the show at every game, whether that be at half-time or before/after the game. Students are not permitted to visit the concession stand during the game (including 3rd quarter).

Awards

Our program recognizes the outstanding achievements of some of its members each season as the band staff and students select people for the following awards. Names of the recipients are displayed on plaques in the Band Room. The awards are presented in May of each year at the annual Band Banquet.

Individual awards are given to members who display excellent musicianship, character, leadership, dedication, and attitude throughout the year. Some of these may include, but are not limited to:

- Honor Band Awards
- Outstanding Class Members
- Outstanding Marcher
- Outstanding Brass, Woodwind, Percussion, and Color Guard
- John Philip Sousa Band Award
- Louis Armstrong Jazz Award
- Patrick S. Gilmore Band Award
- Leadership Excellence Award
- Woody Herman Jazz Award
- All State Award

Letters/Pins

Students at Damonte Ranch High School can earn awards through their participation in Band. After two years of participation, students can earn a letter. Additionally, for every year they continue to participate in Band, they can earn a bar. Students also have the opportunity to earn pins based on achievement that is above and beyond the standards of excellence established in the program. Students earn points towards pins which accumulate from year to year and are awarded based on the following criteria:

Damonte Ranch High School Pin/Letter System (BAND)						
NAME: _____			GRAD YEAR: _____			
	Activity	Points	1 st Year:	2 nd Year: (Letter Received)	3 rd Year:	4 th Year:
1	Band Class* (<i>per class, per semester</i>)	2 pts				
2	Marching Band	5 pts				
3	Student Leadership	5 pts				
4	Voluntary Project Completion (<i>per project</i>)	2 pts				
5	Private Lessons (<i>min. 1 lesson, per quarter</i>)	2 pts				
6	Music/Leadership Camps (<i>non-DRHS, per camp</i>)	2 pts				
7	Audition for Honor Band and/or All-State (<i>per event</i>)	2 pts				
8	Perform in Honor Band	3 pts				
9	Perform in All-State	5 pts				
10	Solo & Ensemble (<i>per event</i>)	3 pts				
11	Independent Small Ensemble (<i>per ensemble</i>)	2 pts				
12	Winter Drumline/ Winter Guard	5 pts				
13	Musical Pit Orchestra	5 pts				
14	Basketball Pep Band (<i>per extra game</i>)	1 pt				
15	Concert Attendance** (<i>per approved concert</i>)	1 pt				
16	Audition for DCI (<i>per camp</i>)	2 pts				
17	Perform in DCI	10 pts				
18	YCO/YSO/RVJO/Community Ensembles	3 pts				
19	Other (<i>see director for approval</i>)	--				

45 points: Blue Star 90 points: Green Star 135 points: Silver Star 180 points: Silver Music Note 200+ points: The Coveted Gold Mustang	TOTALS:				
--	---------	--	--	--	--

*= Concert Band, Wind Ensemble, Jazz Band, Symphony Orchestra, Percussion Techniques

** = Must be a concert you are not performing in with proof of attendance (i.e. a program, a ticket stub, a photo of yourself at said concert)

<h2 style="text-align: center;">Damonte Ranch High School Pin/Letter System (GUARD)</h2>						
NAME: _____				GRAD YEAR: _____		
	Activity	Points	1 st Year:	2 nd Year: <small>(Letter Received)</small>	3 rd Year:	4 th Year:
1	Dance Class <i>(per semester)</i>	2 pts				
2	Marching Band	5 pts				
3	Student Leadership	5 pts				
4	Voluntary Project Completion <i>(per project)</i>	2 pts				
5	Music/Leadership Camps <i>(non-DRHS, per camp)</i>	2 pts				
6	Winter Guard	5 pts				
7	Concert Attendance <i>(per approved concert)</i>	1 pt				
8	Audition for DCI <i>(per camp)</i>	2 pts				
9	Perform in DCI	10 pts				
10	Other <i>(see director for approval)</i>	--				
20 points: Blue Star 45 points: Green Star 65 points: Silver Star 90 points: Silver Music Note 100+ points: The Coveted Gold Mustang		TOTALS:				

STUDENT LEADERSHIP

Drum Major

The Drum Major position is responsible for taking attendance during rehearsals, conducting the ensemble, assisting the Director and Staff during rehearsals and correcting individual errors during marching fundamentals. Drum Majors may be asked to attend some Staff and Booster meetings on an as needed basis. Special workshops will be conducted each spring to provide training for those who wish to prepare for the Drum Major audition. Attendance of a summer Drum Major Camp is a requirement. The Drum Major is the leader of the organization, providing positive direction and instruction to students during and out of rehearsal. The Drum Major manages the entire leadership team.

Assistant Drum Major

This individual will serve in the same capacity as the Drum Major role but will continue to march on the field during the season and conduct backfield if needed. This position is the on-field liaison to the Drum Major position.

Brass/Woodwind/Guard Captains

These folks oversee the progress of the section leaders and section members. They are responsible for sectionals, pulling students for extra help, and communicating with upper leadership/staff to address concerns or other information. These students will lead large ensemble sectionals and may be asked to conduct at times.

Section Leaders

The Section Leader is quite simply a student instructor for their respective wind, percussion or color guard sections. They will be asked to often lead sectionals. They are chosen at the end of the current school year and announced at the Band Banquet for the following year. The selections will be based upon performance and teaching abilities. Each Section Leader is responsible for reporting absences to the Drum Major(s) at the start of every rehearsal and performance. Section Leaders may be asked to attend a leadership camp.

Student Management

LIBRARIAN/LOGISTICS

These people oversee all music for the Band Program and help facilitate the daily student needs regarding music and equipment. The amount of time needed to complete this position successfully will differ from person to person. The music for each Band member must be passed out, collected after it is performed, sorted, and filed away. Processes and procedures involving the movement of large instruments are also devised. There will be times when a great deal of work is required and those where there may be nothing to do whatsoever.

SOCIAL MEDIA COORDINATOR/HISTORIAN

This person is going to have the project of cataloging the band's awards and history. This will also be the contact person for the Yearbook Staff to go to for photos and any pertinent Band program information. This person is also responsible for helping to maintain the band's social media presence in a positive way.

WHERE TO GO TO WITH QUESTIONS

An upper-class men/Section member (**start here**)

A captain/Section Leader

Assistant Drum Major

Drum Major

Staff Member/Band Parent

Director

Band Parent Organization

Band functions require numerous volunteers involved in a variety of functions to be successful. These volunteer duties include fundraising coordinators; chaperones; assistance with the loading of props, instruments and other paraphernalia; uniform fitting and maintenance; the general care and feeding of the students; and numerous miscellaneous responsibilities.

Band fund raising activities are planned and carried out by the Boosters on an as needed basis. Plans have been made for several different fund-raising events this year. Additionally, the organization strives to create and foster better channels of communication among all Damonte Ranch Band parents.

General membership meetings are held on one day of each month throughout the year as per the calendar. Dates are seen on the calendar at www.drhsband.org.

Communication

The DRHS Band Program has several means of relaying important information to students and parents. Below are several ways that information is communicated!

Band App

This is an app literally titled, Band. This will be used to communicate with students and families that elect to be a part of that group. Please join using the QR code. If you do not have access to the app, please e-mail me so that I can manually add you to our alert system. **This program is also available on the web for non-smartphone/app folks.**



Cut Time

Along with being able to track ISAs, Cut Time will be utilized to send mass email notifications.

Music Office

If you need to contact Mr. Kasper or any member of the Damonte Ranch Staff, the DRHS Main Office will get you a connection directly to the Music Office. The best way to get in touch with Mr. Kasper is via email, Matthew.Kasper@washoeschools.net

Band Website

www.drhsband.org

The Band has a fabulous website that is updated almost **daily** with a yearly and weekly calendar, current events, announcements, downloadable forms, Booster details, and a host of other important information. We hope you utilize this tool to its maximum potential. Please, check the site often.

Parent Liaisons

From time to time, we will activate a group of parent volunteers to call home to pass along information or seek volunteers for an activity or fundraiser when time is an issue.

Social Media

Check us out on social media!

Facebook: Damonte Ranch PAC Band Program

YouTube: Damonte Ranch Band

Instagram: @damonteranchbands

TikTok: @drhsband

Frequently Asked Questions

The following are questions you may have regarding the Band Program at Damonte Ranch High School. Our goal at Damonte Ranch is to keep parents and students well informed and to make the transition from middle school to high school a safe and comfortable one for all involved.

WHY IS BAND IMPORTANT IN HIGH SCHOOL?

Parents are even more interested in providing a well-rounded education for their children. High School is one of the most critical times in a student's social and intellectual development. Music is an integral part of a student's growth both intellectually and emotionally. In order for students to succeed in life they need to feel secure, loved, challenged, and proud of their achievement. Band fulfills all these needs. As a matter of fact, you will find many of the best students at Damonte Ranch participating in Band. That kind of success is found in the Band Room because we strongly believe:

- Students in Band develop discipline, positive work habits, and group skills necessary for success in life.
- Band offers creative and aesthetic opportunities that provide for emotional development.
- A student's social skills, self-esteem, and positive attitude are developed through Band.
- Music is one of the few skills that last a lifetime and improves with age.
- Band teaches students to strive for excellence. In a highly technological, materialistic society, we need the special pleasures that music can provide to help us establish the *quality* of our life in a world preoccupied with *quantity*.

I HAVE HEARD THAT BAND TAKES A LOT OF STUDENT'S TIME. WHAT COMMITMENTS ARE INVOLVED?

Some parents are concerned that their student will be over involved, will not have time to study, or will not budget his or her time well. Band does provide the students with a lot of activities throughout the year, but we would not have it any other way! Band teaches students to budget their time effectively. Band does not limit students, because the majority of our members are active in other organizations. One important factor is that Band students can participate in sports as well as Band. This is a major concern for some students. **It is proven statistically that students work best when they are active and doing things that challenge them and that they enjoy!** Students can participate in many academic and extracurricular activities if they are communicating appropriately with all instructors/groups.

Marching Band starts the year off with an exciting Band Camp before school begins. We then rehearse during the school day, some weeknights and occasional weekends. All additional Marching Band rehearsals cease about 2.5 months after school begins. After Marching Band, Symphonic Band performances, competitions, and festivals occur throughout the school year.

WHAT IS BAND CAMP?

Because rehearsal time is limited when school is in session, we meet in June and July before school begins with additional staff to help students learn their music and marching fundamentals. It is very similar to why the fall sports teams begin practice prior to the start of school.

Additionally, this is a "get acquainted" time for Band veterans and an orientation period for the freshman. During Band Camp, we also try to hold several social events for the students and their parents that will further develop the much-desired camaraderie that our Staff desires. All dates and times are on the calendar located at www.drhsband.org.

HOW LONG DOES MARCHING BAND LAST?

Marching Band is active for only a small portion of the school year. The last commitment of the Marching Band is usually toward the third weekend or so in November. At this time, the whole group is dispersed amongst our smaller ensembles. See *Course Offerings*.

IN WHAT WAYS CAN PARENTS GET INVOLVED?

There are many ways to get involved with the Band Program. We cannot run this program successfully without your dedication and talents. Cut Time constantly has volunteer postings on it. There is never any pressure. It is simply a lot of fun and a great feeling to work with students and be a part of the Damonte Ranch Band Program.

HOW ARE TRIPS CHAPERONED?

The Band travels to certain festivals and competitions throughout the year. There may be an additional trip in the spring if funding allows. Parents will be informed of any additions to the calendar in a more than timely fashion. The Band Boosters have a member on its Board of Directors who plans the trips and provides sufficient chaperones (*usually at a ratio of one parent to every 6-8 students*). Trips are carefully organized and rules are strictly enforced. We try to take as many parents on trips as space will allow. Fill out the Volunteer Form on the [website](#) if you even think you will be involved.

WHAT ARE THE BAND BOOSTERS?

The Damonte Ranch Band Boosters is a support group for the Band Program at Damonte Ranch High School. Meetings are held monthly. Issues are discussed and the fundraising projects are organized through these meetings. See the *Band Boosters* section.

HOW WILL I BE KEPT INFORMED OF PERTINENT BAND INFORMATION?

This Handbook is the main body of information for the school year. The Band calendar, located at www.drhsband.org, is updated regularly. Trip itineraries are given to students in advance. General parent meetings are held regularly throughout the year. Band Booster board members can be contacted at any time in order to receive the information that you may need. All important information will also be given out on the Band App.

WILL MY SON OR DAUGHTER BE ABLE TO SCHEDULE ALL OF THE REQUIRED CLASSES AND TAKE BAND AT THE SAME TIME?

YES! Even with our block schedule, there are many students who not only take a Concert Band class and Marching Band, but also are concurrently in Jazz Band, Music Theory, Choir or Orchestra. The most important thing, of course, is careful planning. You can take Band with your required classes and still have room for other electives if you sit down and plan for it during the student's first year of high school. Your student's counselor is an excellent source of help for program planning. Students have also been able to participate in sports concurrently with the Band Program; **we exclude no one!**

MY CHILD IS INTERESTED IN OTHER THINGS THAT DAMONTE RANCH HAS TO OFFER. WHAT OPTIONS ARE AVAILABLE FOR FREEING UP ELECTIVES?

If other electives look attractive to your student, there are many options for students that will be discussed with them during their freshman year. Planning long term is the key. However, careful time management, summer school, and challenge tests are all viable options to create more space in their schedules.

IS IT DIFFICULT TO BE IN BAND AND SPORTS AT THE SAME TIME?

This is perhaps one of the most frequently asked questions. The best way to find out how well this works is to talk to a student that is currently doing both. **Students must communicate with all parties so that conflict resolution can be reached.** Unforeseeable conflicts always will occur, but we will try very hard to work it out with the coach and student. We want students to feel they can try many things as long as they are committed to doing them all well. If there is a problem we will discuss it with the student and try to reach a viable solution that makes the student feel uncompromised.

YOU SAY THAT YOU CAN DO OTHER ACTIVITIES AT THE SAME TIME AS BAND, BUT I NOTICE ON THE CALENDAR THAT SOMETIMES EACH ONE HAS AN EVENT ON THE SAME DAY. WHAT CAN BE DONE ABOUT THESE CONFLICTS?

All activities are important, but a hierarchy of importance exists. If one group has a practice and the other has a game or performance, then the game or performance takes precedence. If both have a performance or game (*unusual*), then the most important event takes precedence. This will be discussed and decided upon by the Director of Bands and the involved supervisor, coach or Athletic Director. **If both groups have rehearsals or practices, then the time should be split equitably among the two activities.**

We have had dozens of students each year participate successfully in Band and sports as well as their church youth groups. It just does not make sense for a student to have to abandon their enjoyment of music for sports or visa-versa. The students that participate in more than one activity are often some of the best academic students at Damonte Ranch. Winter and spring sports rarely, if ever, conflict with a Band activity. We will do whatever it takes to offer music to our students!

MY SON/DAUGHTER SEEMS TO BE UNINSPIRED ABOUT BAND. WHAT CAN I TELL THEM ABOUT THE HIGH SCHOOL PROGRAM THAT MIGHT HELP MOTIVATE THEM TO GIVE BAND A TRY?

There will always be a fear of the unknown when trying something new. However, one cannot know if they will love something if they do not try it! High school Band is a completely different atmosphere and level of expectation than middle school band. The level of performance increases, the quality increases, and students get to travel to new and exciting places. Even though they feel unmotivated or burnt out about Band, as soon as they see what the high school program is about, they cannot help but be motivated about Band, school, and life! Giving up on music could also be compared to the painful process of building a house only to never complete the roof! You are never going to realize the potential of the house because it was never completed. Beginning Band can be compared to the foundation of the structure. Middle school Band is the walls. High school Band is the roof. It is also important to point out how many parts of the roof there are. There are many, many components to this one part of the whole house. Only by going through the complete construction process will your student be able to fully understand and appreciate the experience. As the students grow in this program, they will then be able to help others realize their potential through leadership, guidance, and encouragement.

Schedule of Events:

All ensemble performances for which a student is a member are mandatory. These dates do not include Winter Guard, Winter Drumline, or Basketball Pep Band; Events and details are subject to change.

Marching Band

- 7/29–8/9 Summer marching camp
- 8/12 1st day of school
- 8/16 Football game (vs. Bishop Manogue)
- 9/6 Football game (vs. Fallon)
- 9/13 Football game (vs. Reed)
- 9/20 Football game (vs. Galena) ****HOMECOMING****
- 9/28 Competition/Clinic @ McQueen HS
- 10/4 Football game (vs. North Valleys) ****SENIOR NIGHT****
- 10/5 Competition @ Galena HS
- 10/6–10/12 FALL BREAK
- 10/19 Competition @ Del Oro HS (Loomis, CA)
- 10/25 Competition @ Spanish Springs HS
- 11/2 Damonte Marching Invitational (DMI)
- 11/9 UNR Sierra Band Crusade

Concerts:

Fall Concert – October 1, 6:30 pm (DRHS Theatre)
PAC Winter Gala – December 12, 6:00 pm (Location TBD)
Zone Concert – March 5, 6:00 pm (DRHS Gym)
Spring Concert – March 11, 6:30 pm (DRHS Theatre)
Night of Jazz – May 14, 6:00 PM (Depoali MS)
WCSD Band Festival—May 20, 21, or 22 (UNR)
End-of-Year Concert – May 27, 6:30 pm (DRHS Theatre)

Other Events (dates and times TBA unless listed):

All-State Band/All-State Jazz Auditions—November 13 (DRHS)
WCSD Honor Band & Honor Jazz Auditions—Nov. 20 (Reno HS)
DRHS Band Craft Fair—Dec. 7 (DRHS)
WCSD Honor Jazz Concert—January 16 (Hug HS)
Solo & Ensemble Festival—February 15 (NVHS)
WCSD Honor Band Concert—February 26 (Pioneer Center)
All-State Band/Jazz Band (Las Vegas) – Jan. 31–Feb. 3, 2025
Day of Percussion
Jazz in the Schools Festival
Reno Jazz Festival
Musical – May 8–17 (DRHS)
Band Banquet
Graduation Performance – June TBA

DRHS Cell Phone & Technology Policy

In the best interest of student learning and wellness, Damonte Ranch High School will be implementing a NO CELL PHONE policy during class time with clear and consistent expectations. We believe this policy will minimize distractions from teaching and learning. We are committed to the academic success, enrichment, and wellbeing of all students and appreciate your partnership and support as we elevate our focus on learning for our Mustangs.

Student use of cell phones and smart watches will not be permitted anywhere in the school building during designated learning time— this applies to aides, peer tutors, and off-campus students in the building, as well as classroom students.

Classroom:

Students must bring a charged laptop and laptop charger to all classes. School laptops are available for check out in the library. For personal laptops we recommend Windows friendly computers. Students with personal laptops cannot access games, apps, or messaging during instructional time.

- First offense—student is given a warning that will be documented as a major behavior-technology violation. If a student has a single major behavior technology entry for the semester, the student can submit an appeal at the end of the semester to erase the entry from their permanent record.
- Second offense—major behavior-technology violation and disregard for school rules, student will lose the privilege of bringing a personal computer to school for one semester.

Students are expected to store silenced cell phones and smartwatches in a backpack or with the teacher during class time. Devices cannot be on a student's person. Students cannot access cell phones or smartwatches during instructional time. Any infraction of this policy will result in a major behavior referral, the device will be sent to the Corral.

- First offense—the student can pick up the device at the end of the day. If a student has a single major behavior technology entry for the semester, the student can submit an appeal at the end of the semester to erase the entry from their permanent record.
- Second offense—parent/guardians will be responsible for picking the device up.
- Third offense—parent/guardians will be responsible for picking the device and the student will receive a behavior entry for disregard for school rules.

Hallways:

Cell phones and smartwatches cannot be in the hallways/bathrooms/library/office areas during scheduled class time. Students on a pass must leave their devices stored in the classroom. Students caught with a device on their person in the hallway/bathroom/library/office areas during class time will have their device confiscated and the device will be stored in the Corral until the end of the day.

- First offense—student picks up device. Major behavior-technology violation. If a student has a single major behavior technology entry for the semester, the student can submit an appeal at the end of the semester to erase the entry from their permanent record.
- Second offense—parents will pick up the device up from the Corral. Major behavior violation-technology and disregard for school rules.

Exception:

- Teachers can ask students to use their phones for a defined academic use. This is usually for a specialized classroom. The teacher would define this use in their syllabus and consequences for misuse. This will be very limited. If students can use a laptop, to perform the same activity, students will need to use the laptop.
- 504/IEP accommodations that address use of phone, ear buds, smart watches in the classroom.

Handbook Recognition Form

I have read the 2024-2025 Damonte Ranch Band Handbook and understand the stated expectations and guidelines as a condition of my membership of the Damonte Ranch High School Band Program.

Student Printed Name _____

Student Signature _____

Date _____

I have read the 2024-2025 Damonte Ranch Band Handbook and understand the stated expectations and guidelines as a condition of my young adult's membership of the Damonte Ranch High School Band Program.

Parent Printed Name _____

Parent Signature _____

Date _____

MEDIA RELEASE

Performances and rehearsals are sometimes publicized in the media. There is a possibility your child may be photographed, recorded, and/or interviewed and publicly published as part of advertising and promotional materials, as well as event programs. These may appear in newspapers, newsletters, school websites, social media sites, television, radio, and other communications.

I (initial one) ____ give my permission ____ do not give my permission for my student,
_____, to be recorded, filmed, photographed, interviewed and/or for such recordings, films, photographs and/or interviews to be publicly exhibited, distributed, or published along with my student's name, whether undertaken by District staff, a student (as part of a school-approved project), or the media. I understand that information posted on the internet will be available to anyone and for an unspecified amount of time beyond the current school year. I agree that the District may use, or allow others to use, those works without limitation or compensation. I grant permission for the right to edit, use and reuse such recordings, films, photographs and/or interviews for non-profit purposes including use in print, on the internet, and all other forms of media. I release the Washoe County School District and its agents and employees from all claims, demands, and liabilities whatsoever in connect with the above. By signing below, I verify that I understand the above release.

Signature of Parent/Guardian _____ Dated: _____